

MATRIX PACKAGING MACHINERY

PRO SERIES

V E R T I C A L F O R M / F I L L / S E A L

**The Best Value
in the Industry**

PROMAX

FEATURES:

- Max. Bag Size:
24" Wide Pillow Bag
19" Wide x 6" Deep Gusseted Bag
36" Long (40" Long Bag Available)
- Film Material:
Unsupported Polyethylene
24" Maximum Roll Diameter
52" Maximum Web Width
- Robust "Steelit" Painted Carbon Steel Frame
(Optional Stainless Steel Frame Available)
- Impulse Sealing System or Poly Pro Sealing System
- Continuous Hot Air Backseal
- Automatic Film Tracking System
- Motorized Load Shelf with Lift Plate
- True "bottom-up fill" to reduce dust and leakage
- Bladder Type Expanding Air Shaft
- Motorized Film Unwind
- Motorized Film Roll Lift Device
- Splice Assist Device
- PLC Based Control System (No Custom Boards)
- No Proprietary Parts

OPTIONS:

- Gusseting Device
- Impulse Labyrinth Seal with Air Deflation
- Integrated Take-Away Conveyor
- Photo-Eye for Printed Film Registration
- Thermal Transfer or Hot Stamp Printers
- Static Eliminator
- Vacuum Drop Assist/Carry Handle



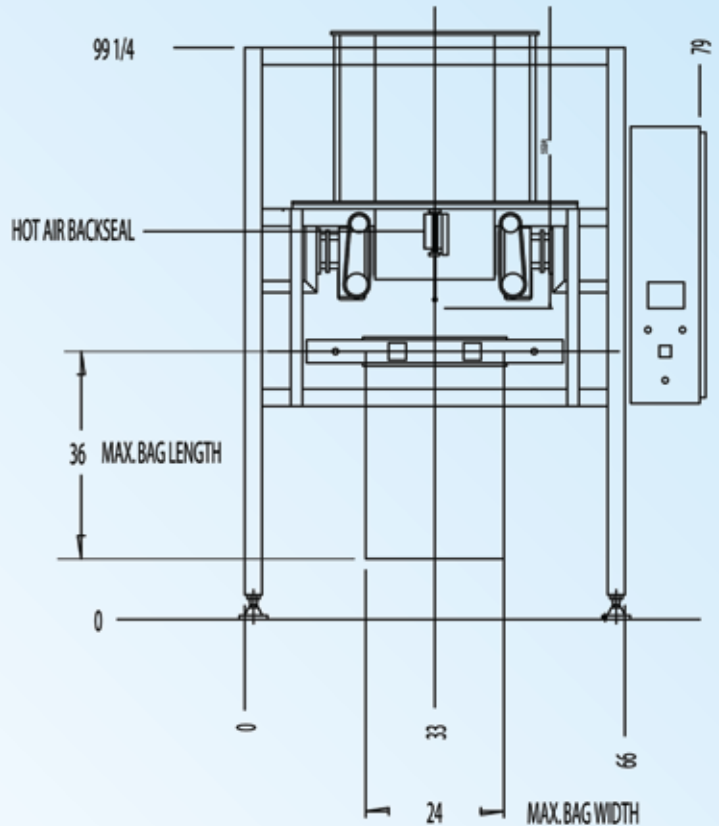
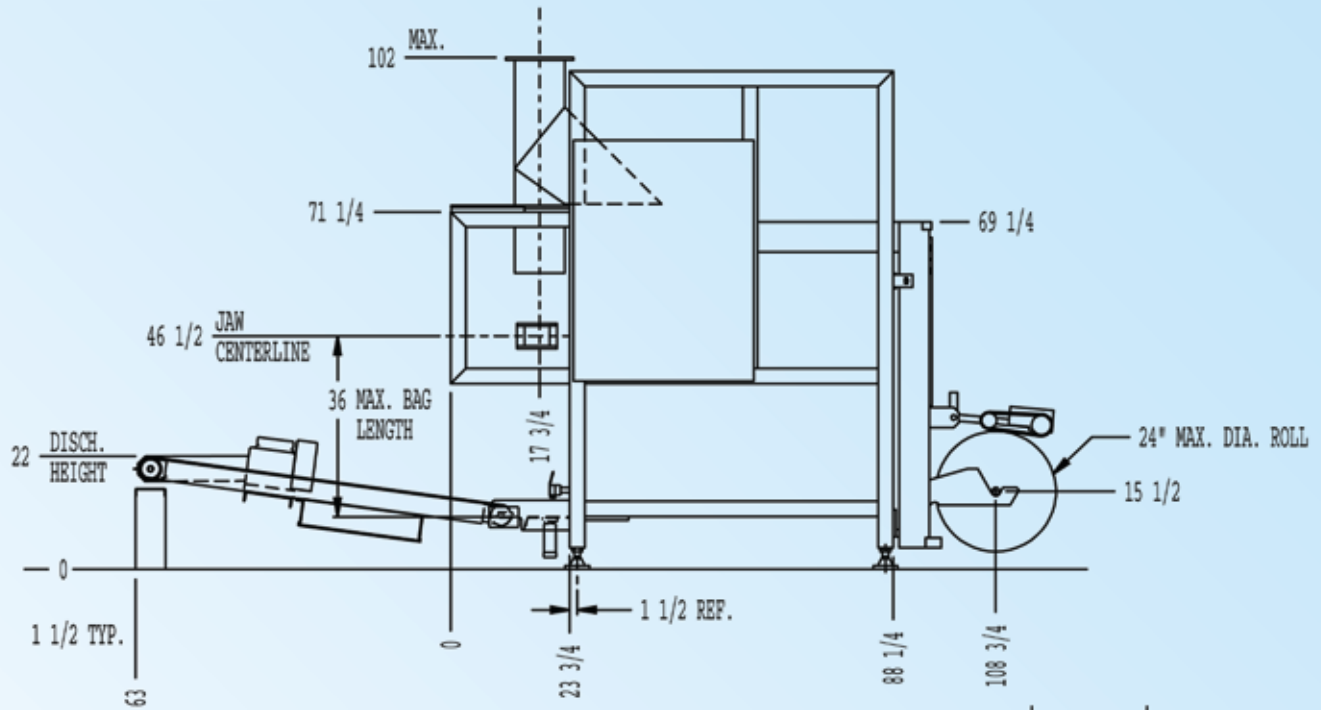
MATRIX
 PACKAGING
 MACHINERY INC.



RUNNING WITH MATRIX

650 Dekora Woods Blvd. Saukville, WI 53080
Phone: (262) 268-8300 www.matrixpm.com

PROMAX



MATRIX 
PACKAGING 
MACHINERY  INC.



650 Dekora Woods Blvd. Saukville, WI 53080
 Phone: (262) 268-8300 www.matrixpm.com

RUNNING WITH MATRIX